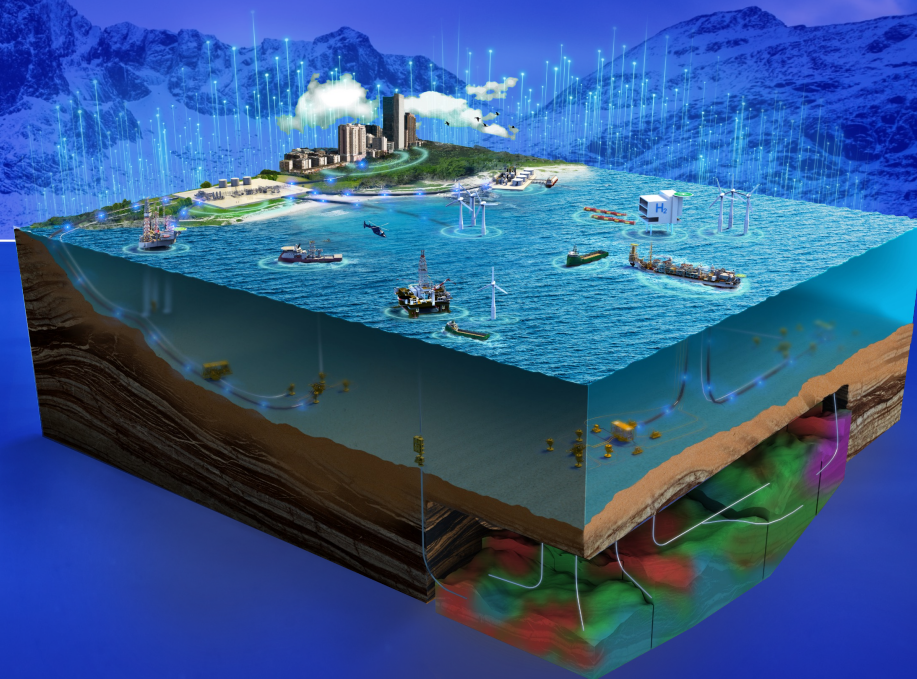


The Future Energy System

Shaped, Scaled and Accelerated here, in Norway

Bore- og Riggkonferansen 8. November 2023

Olav Lien
Production Systems Manager – SCA





Who we are

Global Technology Company

What we do

Driving Energy Innovation

Why

For a Balanced Planet

Decarbonizing industry

Working together to
abate emissions

Innovating in oil and gas

Improving performance
in the oil and gas industry

Scaling new energy systems

Accelerating the transition
to clean energy

Delivering digital at scale

Accelerating
time to value



Pioneered in Norway

Powering the World

A Tradition of Energy Technology Leadership



1966

NCS' 1st well log - Ocean Traveler Rig

Global offshore forever transformed

2002

Petrel E&P Software Platform

Propels Global E&P to the digital age

2022

Oslo Innovation Factory

Accelerates AI/ML innovation & adoption

2023

SLB-ZEG SDA

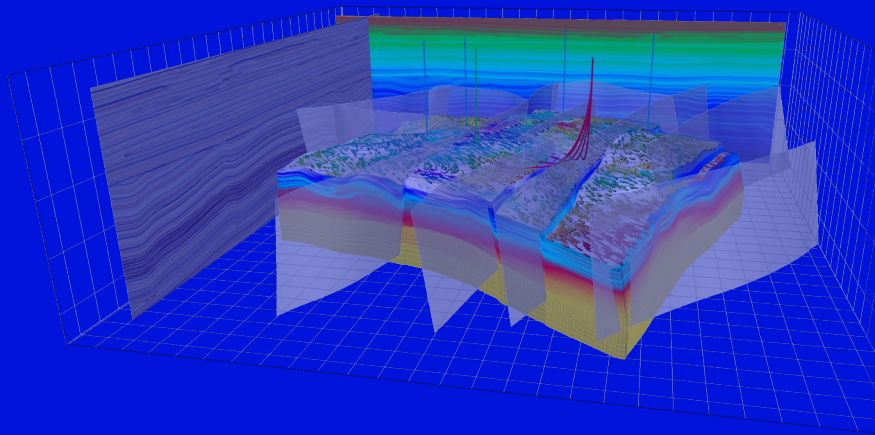
Scale global clean hydrogen

2023

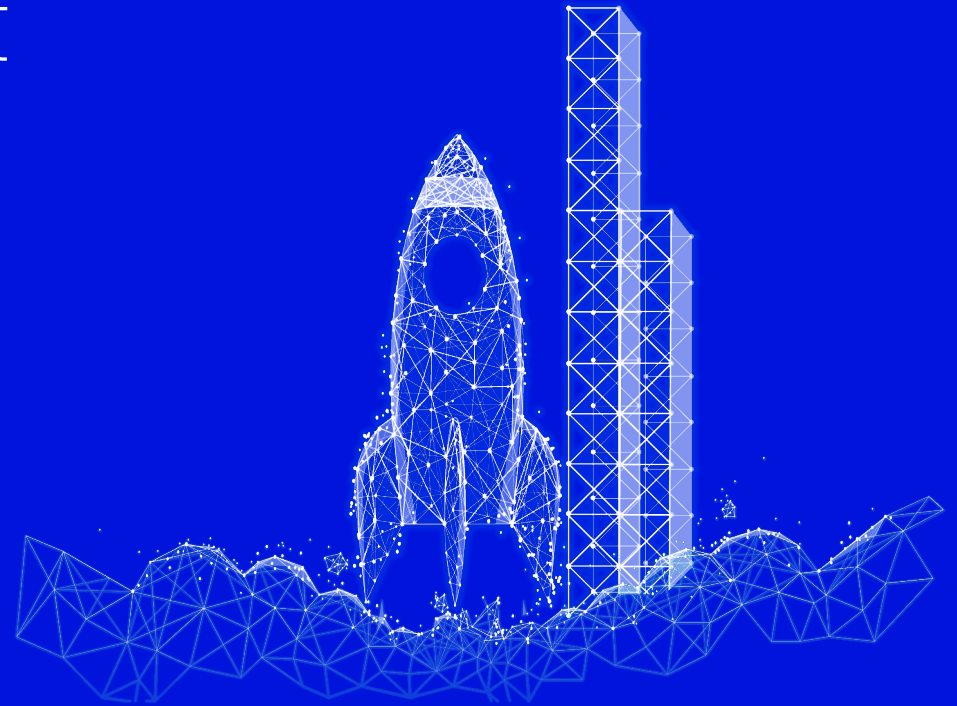
Subsea Joint Venture

Transform global subsea economics & decarbonization

Technology at the heart



Subsurface Centric



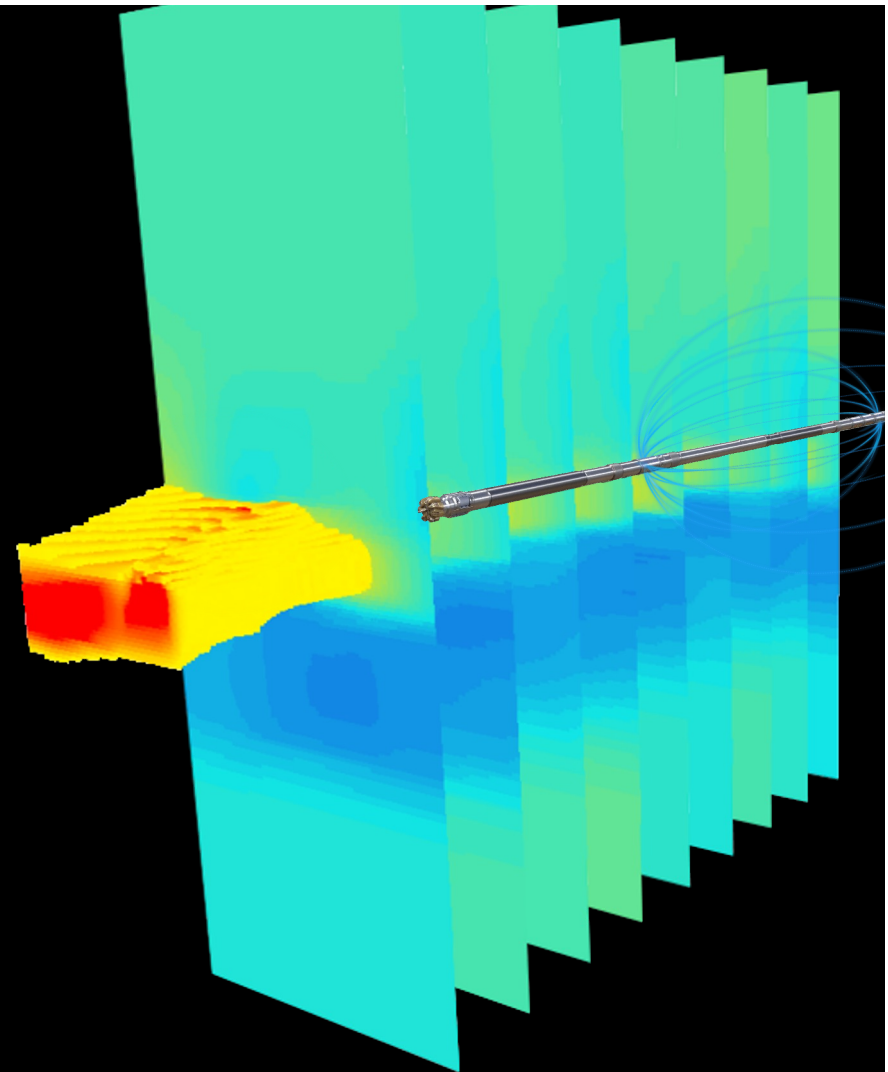
Efficient



GeoSphere 360

3D reservoir mapping-while-drilling service

- Real-time 3D volumetric reservoir mapping and steering
- End-to-end digital workflow on cloud or premises
- 2D transverse inversion on demand
- 1-Click Digital 3D Reservoir Mapping interpretation in RT for rapid realization of reservoir models



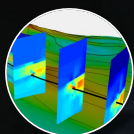
GeoSphere 360 is a mark of SLB.

GeoSphere 360

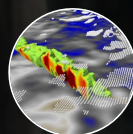
3D reservoir mapping-while-drilling service

Understanding Your Reservoir

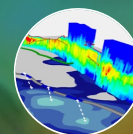
APPLICATIONS



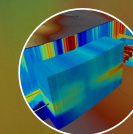
3D RESERVOIR STEERING



3D RESERVOIR
UNDERSTANDING



3D RESERVOIR
DYNAMICS



3D FIELD DEVELOPMENT
PLANNING

BENEFITS

IMPROVED
PRODUCTION

ACCURATE RESERVE-
IN-PLACE
EVALUATION

OPTIMIZED
COMPLETION DESIGN

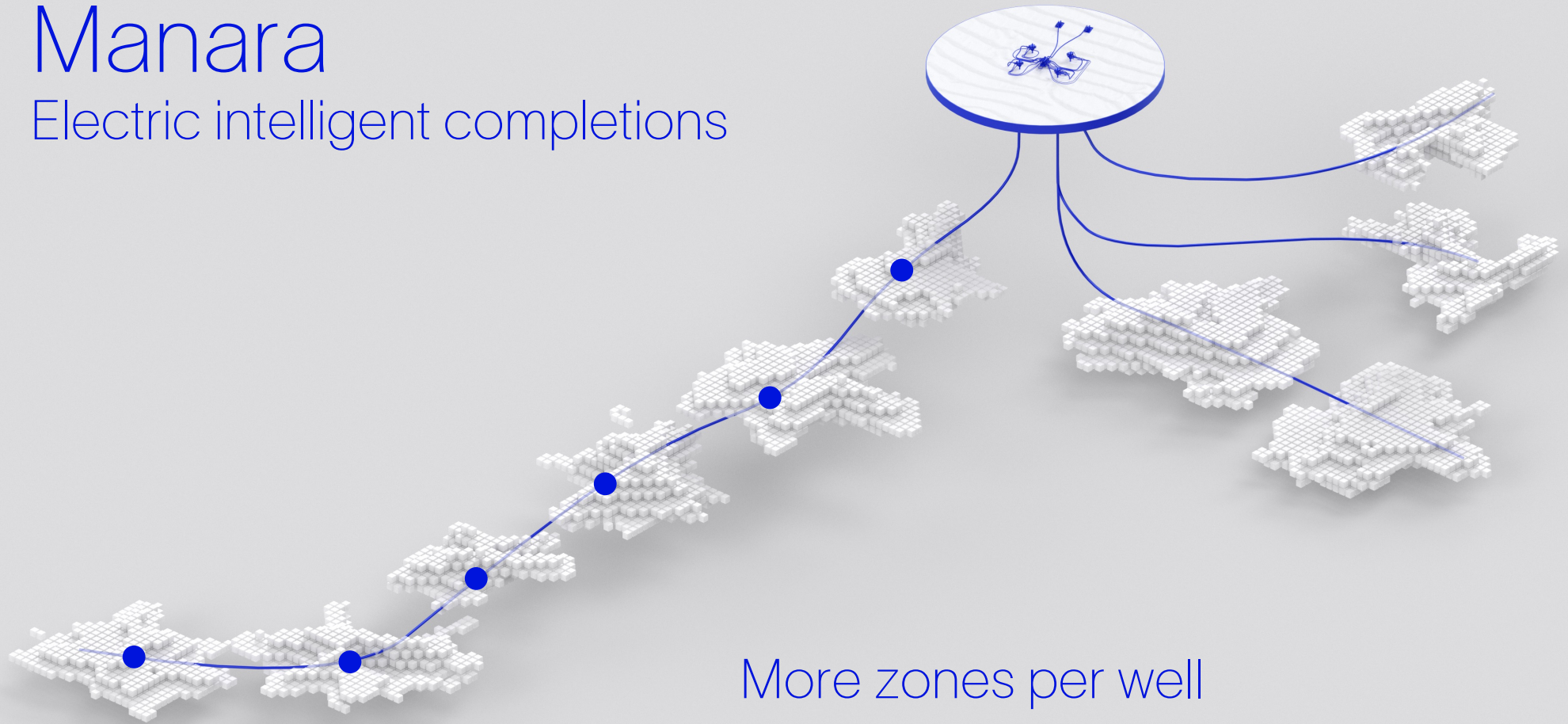
EXTENDED
FIELD LIFE



GeoSphere 360 is a mark of SLB.

Manara

Electric intelligent completions



More zones per well

Pressure, temperature, water cut, flow rate measurement and electric flow control valve inside each zone



The image features a 3D visualization on a light gray background. A series of approximately ten wireframe rectangular boxes are arranged in a zig-zag pattern across the space. Each box contains a collection of small, semi-transparent cubes in various colors, including white, green, yellow, blue, and orange. A prominent blue line with a dashed segment at the beginning traces a path through the boxes, starting from a single blue cube at the top left and ending at a cluster of cubes in the bottom right box. The text "Data to assure asset uptime" is positioned in the upper right area of the visualization.

Data to assure asset uptime

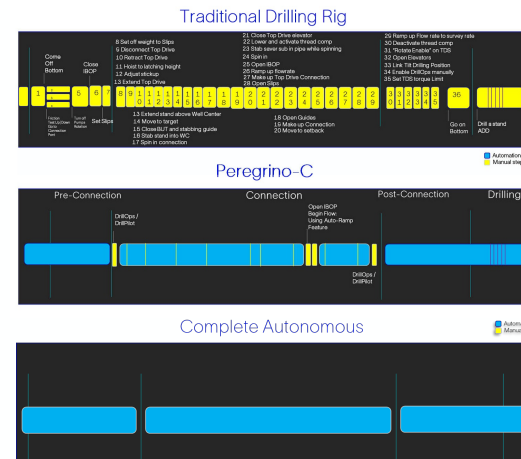
Data and precise control
to enhance production
and recovery with confidence

Autonomous Drilling

The **most** integrated ADC system, seamlessly combining **surface** automation with **autonomous on-bottom drilling & directional drilling**



Peregrino C



Surface

Implemented

- Connection – S2S
- Trip In Hole
- Trip Out Of Hole
- Casing Running



Drilling

Implemented

- DrillaStand
- AutoROP
- AutoDownlink



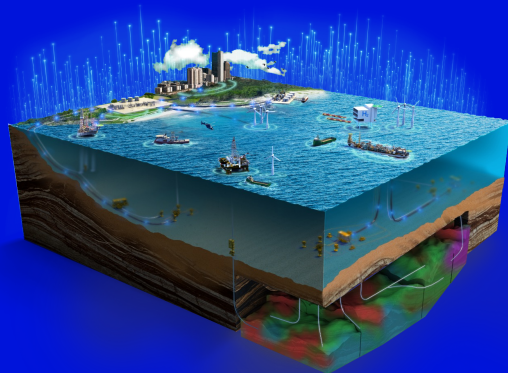
Directional Drilling

Implemented

- 17 1/2"
- 12 1/4"

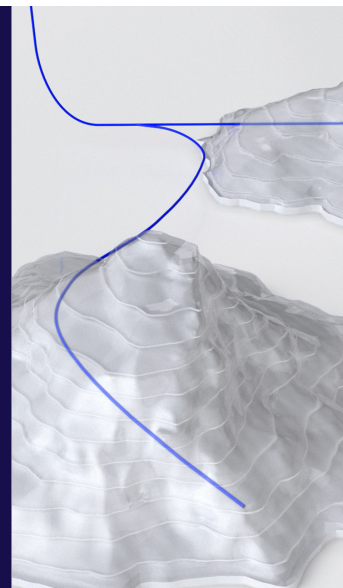
Neuro
Autonomous
Solution

Fundamentals in Shaping the Future Offshore Energy System



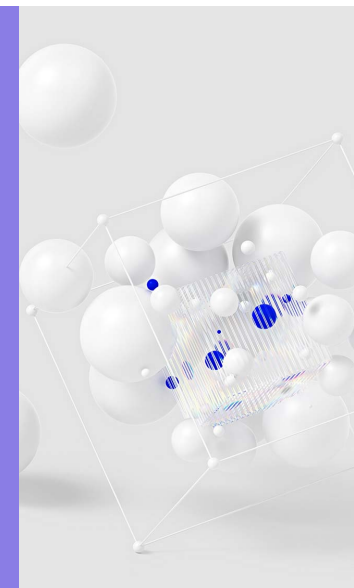
Competency

Attract best talent



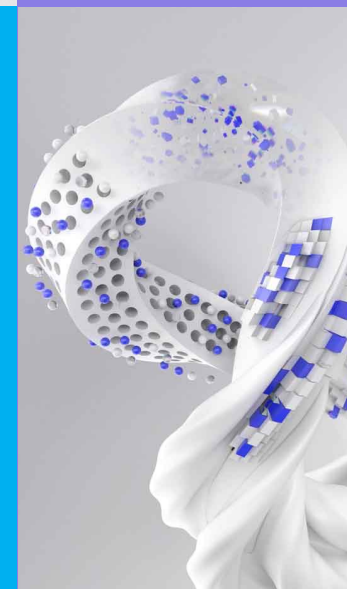
Low Carbon

Reduced emissions
driving actions



Technology

Customer driven, fit
for purpose



Partnership

Predictable industry,
long term contracts



Thank You



Who we are

Global Technology Company

What we do

Driving Energy Innovation

Why

For a Balanced Planet